

ME-31

– MistEliminator, 4-step filtration

TECHNICAL DATA

Unit specification

| | |
|-------------------------|---|
| Housing material: | Galvanized steel |
| Housing finish: | Epoxy powder coat |
| Unit weight: | 90 kg / 198 lbs |
| Unit dimensions: | H: 1603 mm / 63 1/32 inch W: 675 mm / 26 9/16 inch D: 695 mm / 27 7/16 inch |
| Max. air volume: | 3000 m ³ /h / 1765 CFM |
| Max. negative pressure: | 4000 Pa / 16" wg |
| Oil drain container: | 10 litre / 2.6 gal |
| Filter indicator: | Manometer 0-2000 Pa / 0-8" wg |

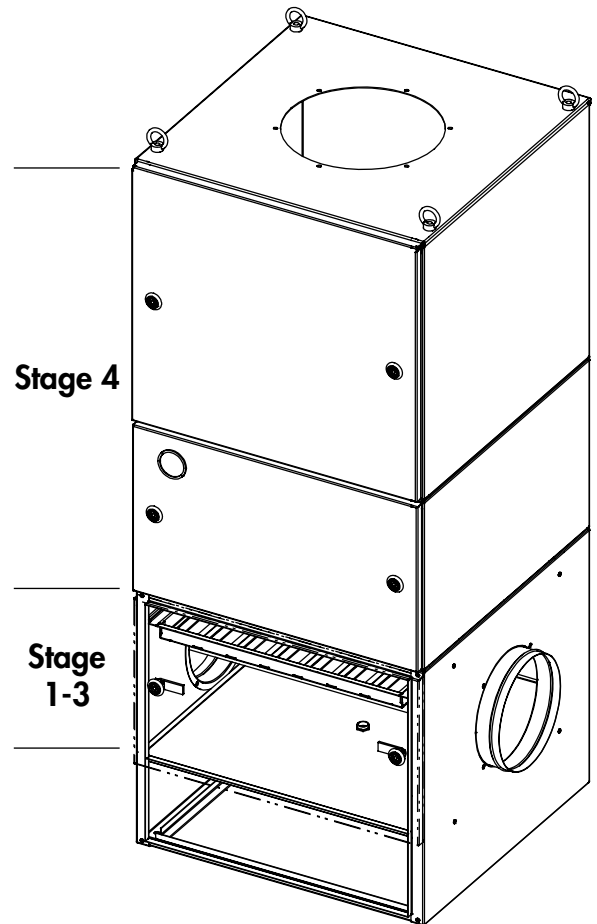
Filter elements:

- Stage 1:** Pre separator
- Stage 2:** Hydro filter (Impinger) – IMP-ME
- Stage 3:** Pre filter, Aluminium – PF-INL-AL
- Stage 4:** Bag filter – BFME-31-95
95% ASHRAE/F9 Eurovent

Filter stage pressure

- Initial filter pressure over filter stage:
50 Pa / 0.2" wg
- Final filter pressure over filter stage:
500 Pa / 2.0" wg

Total filter unit pressure loss – for dimensional purpose
700 Pa / 2.7" wg

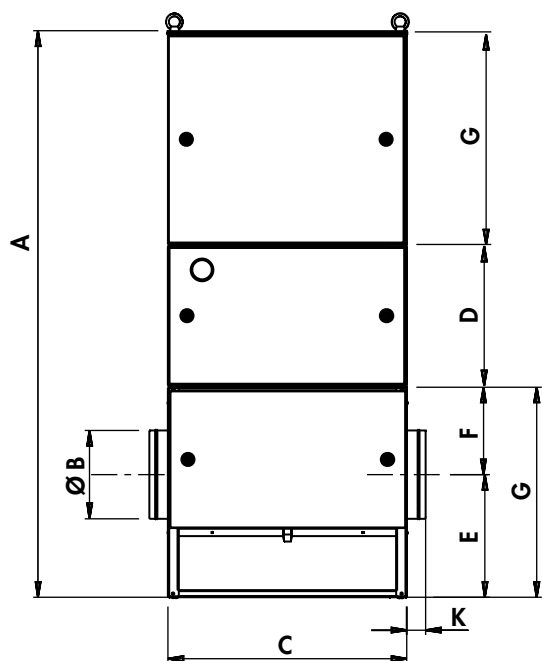


SOUND POWER DATA

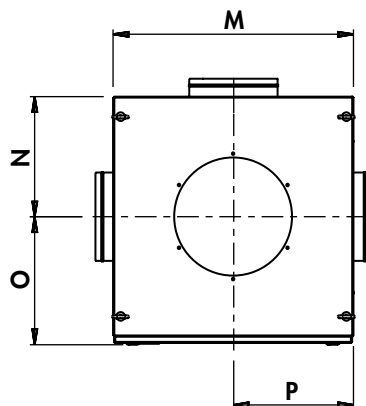
| TEV-fan model | Static pressure Pa / in wg | Airflow m ³ /h / CFM | Octave Band (Hz) | | | | | | | LwA |
|---------------|-------------------------------|------------------------------------|------------------|--------|--------|--------|---------|---------|---------|------|
| | | | 63 Hz | 125 Hz | 250 Hz | 500 Hz | 1000 Hz | 2000 Hz | 4000 Hz | |
| TEV-385-50 | 250 / 1.0 | 3600 / 2100 | 68.7 | 72.7 | 78.4 | 73.4 | 76.9 | 69.7 | 64.6 | 79.3 |
| TEV-585-50 | 400 / 1.6 | 6240 / 3750 | 84.3 | 84.9 | 86.3 | 81.7 | 82.5 | 77.2 | 70.8 | 85.9 |
| TEV-765-50 | 400 / 1.6 | 9100 / 5350 | 86.4 | 84.1 | 86.4 | 81.6 | 84.0 | 78.7 | 74.8 | 87.1 |
| TEV-985-50 | 650 / 2.6 | 13800 / 8100 | 90.2 | 94.4 | 95.4 | 92.3 | 93.2 | 86.3 | 80.7 | 95.8 |

The sound power measurement in accordance with SS ISO-5135.

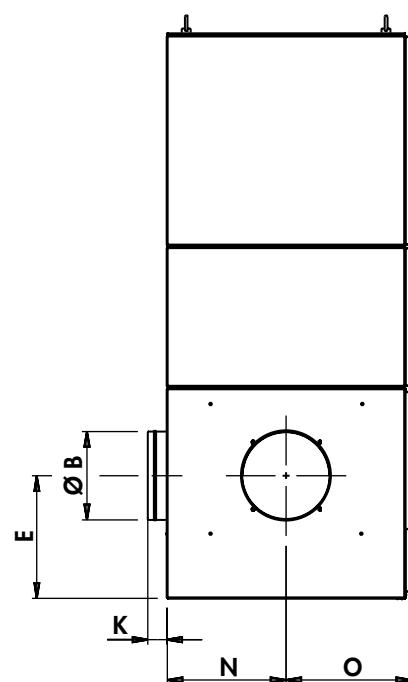
Front view



Top view

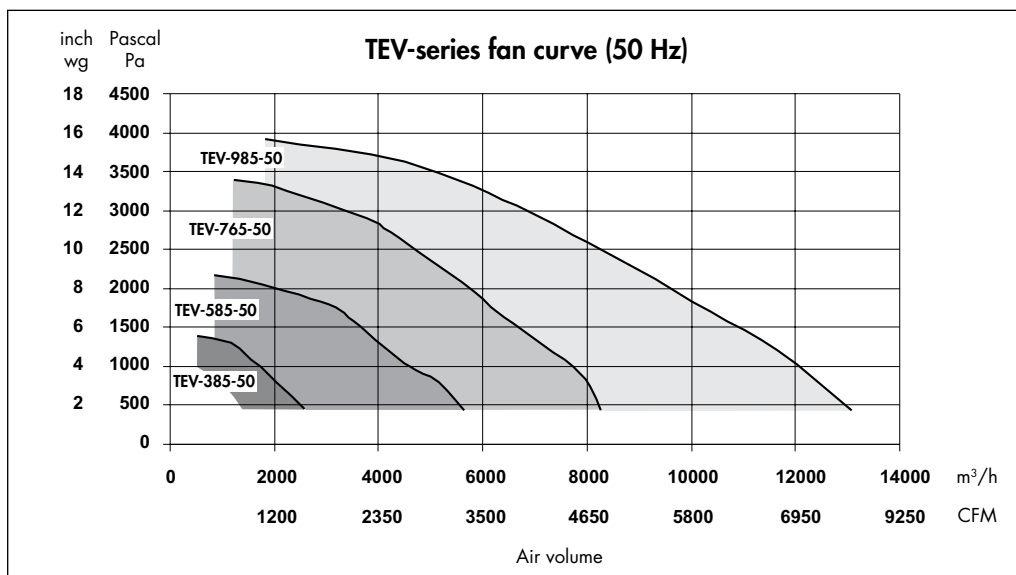


Side view



| | mm | inch |
|---|------|----------|
| A | 1603 | 63 1/32 |
| B | 250 | 9 27/32 |
| C | 675 | 26 9/16 |
| D | 395 | 15 9/16 |
| E | 347 | 13 11/16 |
| F | 247 | 9 3/4 |
| G | 595 | 23 7/16 |
| K | 53 | 2 1/8 |
| M | 680 | 26 25/32 |
| N | 339 | 13 3/8 |
| O | 356 | 14 1/32 |
| P | 340 | 13 13/32 |

FAN DATA



PLYMOVENT®

PlymoVent AB

Industrigatan 26,
SE-212 14 Malmö, Sweden
Tel: +46 40 30 31 30,
Fax: +46 40 30 31 40
www.plymovent.com
info@plymovent.se

PlymoVent Ltd

Marley Way, Southam Road, Banbury,
Oxfordshire OX16 2RA, England
Tel: (01295) 25 93 11,
Fax: (01295) 27 17 50
www.plymovent.co.uk
info@plymovent.co.uk

PlymoVent representative

