

ME-42

– MistEliminator, 6-step filtration

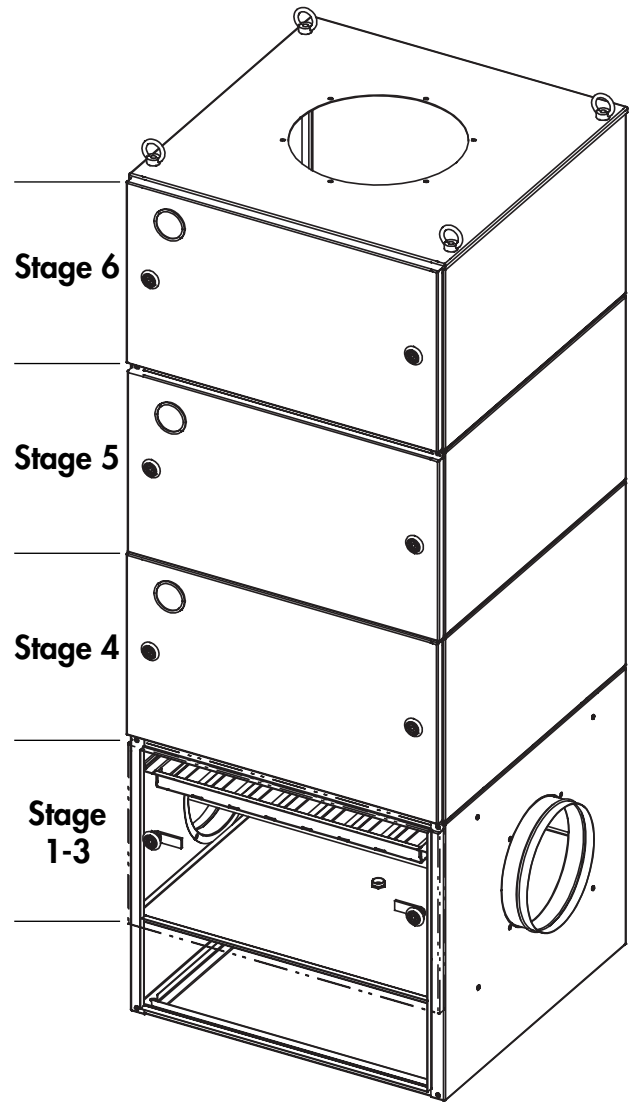
TECHNICAL DATA

Unit specification

Housing material:	Galvanized steel
Housing finish:	Epoxy powder coat
Unit weight:	117 kg / 257 lbs
Unit dimensions:	H: 1798 mm / 70 ²⁵ / ₃₂ inch W: 675 mm / 26 ⁹ / ₁₆ inch D: 695 mm / 27 ⁷ / ₁₆ inch
Max. air volume:	2000 m ³ /h / 1175 CFM
Max. negative pressure:	4000 Pa / 16" wg
Oil drain container:	10 litre / 2.6 gal
Filter indicator:	Manometer 0-2000 Pa / 0-8" wg

Filter elements:

- Stage 1:** Pre separator
- Stage 2:** Hydro filter (Impinger) – IMP-ME
- Stage 3:** Pre filter, Aluminium – PF-INL-AL
- Stage 4:** 16 m² Self draining coalescing cassette filter – OC-1
Filter pressure over filter stage
 Initial filter pressure over filter stage:
 100 Pa / 0.4" wg
 Final filter pressure over filter stage:
 500 Pa / 2.0" wg
- Stage 5:** 24 m² Self draining coalescing cassette filter – OC-2
Filter pressure over filter stage
 Initial filter pressure over filter stage:
 100 Pa / 0.4" wg
 Final filter pressure over filter stage:
 800 Pa / 3,15" wg
- Stage 6:** HEPA filter – HFME-3
 99.97% ASHRAE/H12 Eurovent
Filter pressure over filter stage
 Initial filter pressure over filter stage:
 150 Pa / 0.6" wg
 Final filter pressure over filter stage:
 800 Pa / 3,15" wg



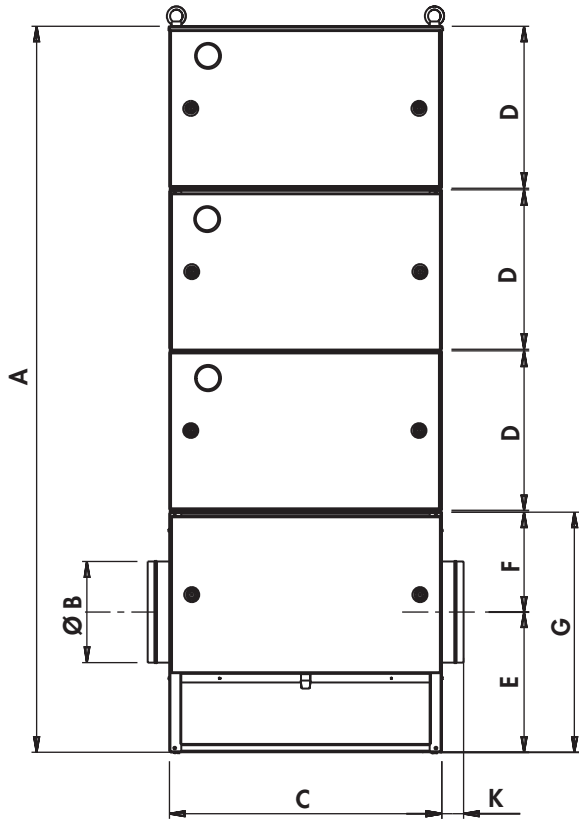
Total filter unit pressure loss – for dimensional purpose
 1500 Pa / 6.0" wg

SOUND POWER DATA

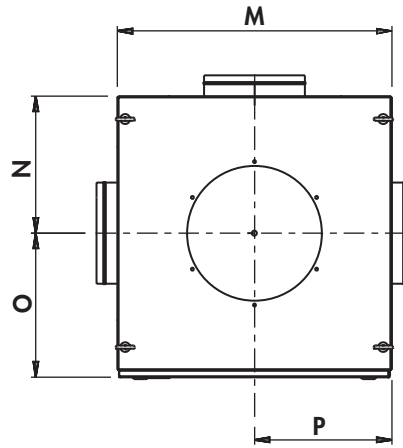
TEV-fan model	Static pressure Pa / in wg	Airflow m ³ /h / CFM	Octave Band (Hz)							
			63 Hz	125 Hz	250 Hz	500 Hz	1000 Hz	2000 Hz	4000 Hz	LwA
TEV-385-50	250 / 1.0	3600 / 2100	68.7	72.7	78.4	73.4	76.9	69.7	64.6	79.3
TEV-585-50	400 / 1.6	6240 / 3750	84.3	84.9	86.3	81.7	82.5	77.2	70.8	85.9
TEV-765-50	400 / 1.6	9100 / 5350	86.4	84.1	86.4	81.6	84.0	78.7	74.8	87.1
TEV-985-50	650 / 2.6	13800 / 8100	90.2	94.4	95.4	92.3	93.2	86.3	80.7	95.8

The sound power measurement in accordance with SS ISO-5135.

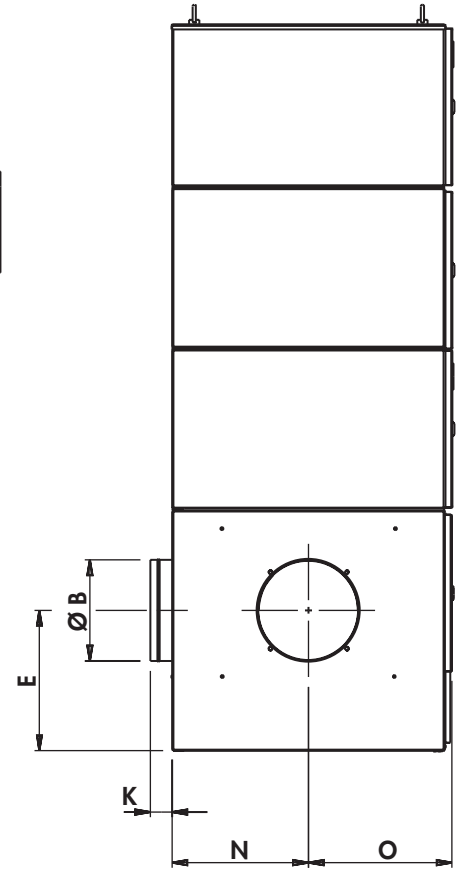
Front view



Top view

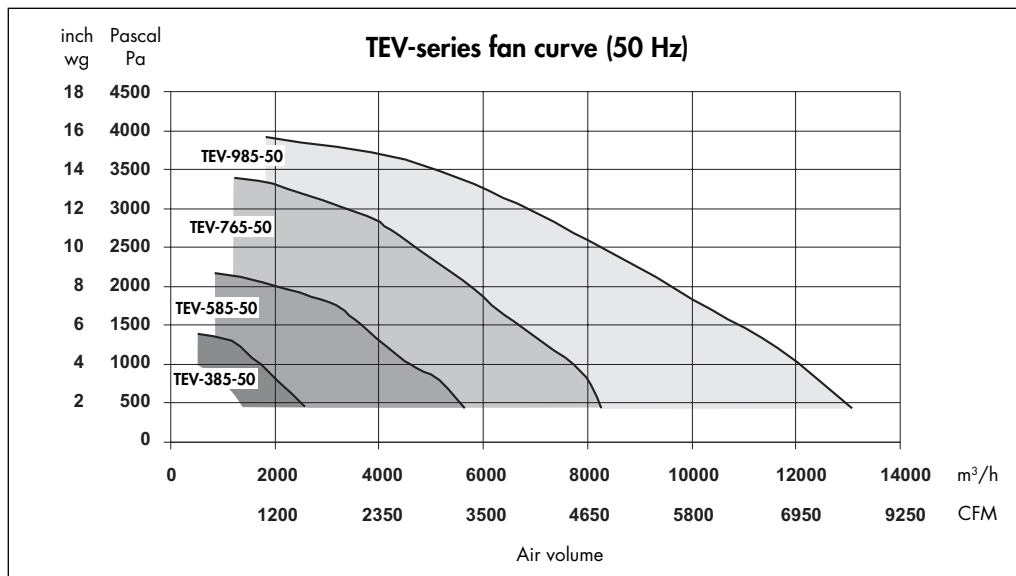


Side view



	mm	inch
A	1798	70 25/32
B	250	9 27/32
C	675	26 9/16
D	395	15 9/16
E	347	13 11/16
F	247	9 3/4
G	595	23 7/16
K	53	2 1/8
M	680	26 25/32
N	339	13 3/8
O	356	14 1/32
P	340	13 13/32

FAN DATA



PlymoVent AB

Föreningsgatan 37,
SE-211 52 Malmö, Sweden
Tel: +46 40 30 31 30,
Fax: +46 40 30 31 40
www.plymovent.com
info@plymovent.se

PlymoVent Ltd

Marley Way, Southam Road, Banbury,
Oxfordshire OX16 2RA, England
Tel: (01295) 25 93 11,
Fax: (01295) 27 17 50
www.plymovent.co.uk
info@plymovent.co.uk

PlymoVent representative

