

REC

NOZZLE

The REC nozzle is designed for Plymovent's fixed extractors and exhaust hose reels.

REC is recommended for today's trucks, private cars and especially vehicles with twin exhaust pipes. The REC is designed to take in ambient cooling air, which reduces the exhaust emission temperature. The nozzle is composed of moulded, high temperature resistant rubber.

The REC is also equipped with an inner spring clip in order to strengthen the connection with the exhaust pipe.

The nozzle also includes a CO-outlet for measuring emission values.



APPLICATIONS

The REC is intended to be used for the following applications:

- automotive service facilities, public works garages and vo-tech facilities in which gasoline or diesel-powered vehicles are generating hazardous exhaust fumes.



SPECIFICATIONS

Physical dimensions and properties

Material	Metal tube / Nitrile butadiene rubber (NBR) lid
Color	Black (powder coated)

Diameters available	4 to 6 in. (100 to 150 mm)
---------------------	----------------------------

Ambient conditions

Operating Temperature	up to 550°F (300°C) continuous; up to 1200°F (650°C) intermittent;
-----------------------	--

Clamps

A standard hose clamp is provided. If you are using REC with an external helix hose, you will need to order a bridge clamp.

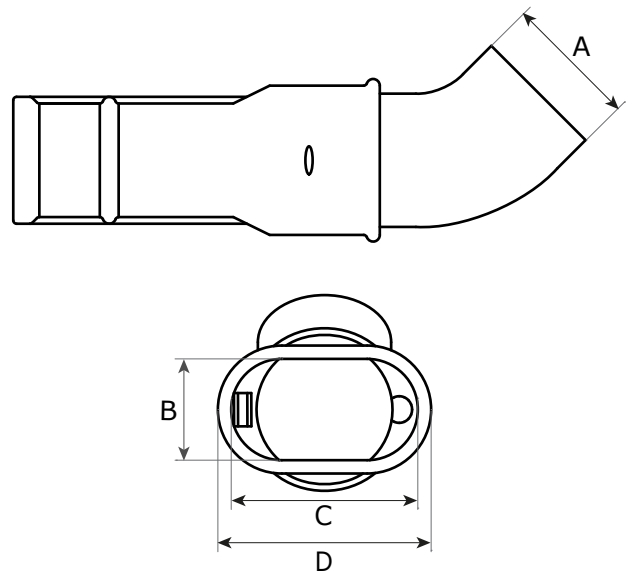
Product combinations

Hose Drops / Reels	<ul style="list-style-type: none"> • FE/FEB • SER/MER/MHR/MSHR
--------------------	--

Order information

Article no.	see remaining specifications
Number (package)	1

DIMENSIONS



Product Name	A	B	C	D
REC-100-115	Ø 4 in. (100 mm)	76 mm (3.0 in.)	140 mm (5.5 in.)	160 mm (6.3 in.)
REC-100-160	Ø 4 in. (100 mm)	4 in. 102 mm	195 mm (7.7 in.)	215 mm (8.5 in.)
REC-125-160	Ø 5 in. (125 mm)	4 in. 102 mm	195 mm (7.7 in.)	215 mm (8.5 in.)
REC-150-160	Ø 6 in. (150 mm)	4 in. 102 mm	195 mm (7.7 in.)	215 mm (8.5 in.)

*The 3 in. (75 mm) is not available in North America.

FEATURES & BENEFITS

- Metal construction
- Spring-loaded rubber lip that closes when not in use
- Ideal for automotive and light duty truck vehicle operations
- Pulls in ambient cooling air, reducing the exhaust emission temperature.

Airflow Volume: General Guidelines		
Vehicles Serviced	cfm (m³/h)	Hose Diameter
Automobile	270-300 (460-510)	4 in. (100 mm)
Motorcycle	600-650 (1020-1105)	6 in. (150 mm)
Trucks (Public Works, Rental Fleets, etc.)	500-550 (850-935)	5 in. (125 mm)
Heavy Duty Trucks	650-800 (1100-1360)	6 in. (150 mm)
Off-Road (Constr., Compressor Tests, etc.)	1000-1400 (1800-2400)	8 in. (200 mm)

Note: These guidelines will vary based on types of vehicles and service work being performed. If the facility conducts Dyno Testing, CFM will vary based on types of vehicles and length of test period. Please refer to the Plymovent Vehicle Exhaust Extraction System Design Guide for more details.

REMAINING SPECIFICATIONS

Art. no.	Product Name	Dimensions	Weight
0000105274 90205-1011	REC-100-115	Ø 4 in. (100 mm) Hose Connection to 4.5 in. (115 mm) Large End Opening	2.5 lbs (1,15 kg)
0000105251 90210-1011	REC-100-160	Ø 5 in. (125 mm) Hose Connection to 6 in. (150 mm) Large End Opening	4 lbs (1,8 kg)
0000105246 90215-1011	REC-125-160	Ø 5 in. (125 mm) Hose Connection to 6 in. (150 mm) Large End Opening	3.2 lbs (1,45 kg)
0000109679 990220-1011	REC-150-150	Ø 6 in. (150 mm) Hose Connection to 6 in. (150 mm) Large End Opening	4.1 lbs (1,85 kg)

Plymovent Authorized Distributor:

Product type	REC™
Article no.	see remaining specifications
Product category	nozzles
Version	270818/1

Always check the latest version on www.plymovent.com